

NEW STYLE



HERREN T-SHIRT

**STANLEY
ADORER**
STTM606

Leichtes Herren T-Shirt

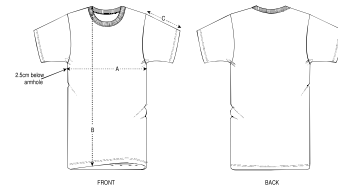
Singlejersey
100% gekämmte ringgesponnene Bio-Baumwolle
140 GSM

- Eingesetzte Ärmel
- 1x1 Rippstrick am Ausschnitt
- Doppelabsteppung an Ärmelenden und unterem Saum

NORMALE PASSFORM

S	M	L	XL	XXL
---	---	---	----	-----

Size guide



SIZES	S	M	L	XL	XXL
A Half C hest	47	50	53	56	59
B Body Length	70	72	74	76	78
C Sleeve Length	19.5	19.5	20.5	20.5	21.5

WHITES



WHITE

COLORS



FRENCH NAVY

BLACK

ESSENTIAL HEATHERS



HEATHER GREY

STANLEY/STELLA

Wash similar colours together, do not iron on print, wash and iron inside out.

